



6 Chisel Way

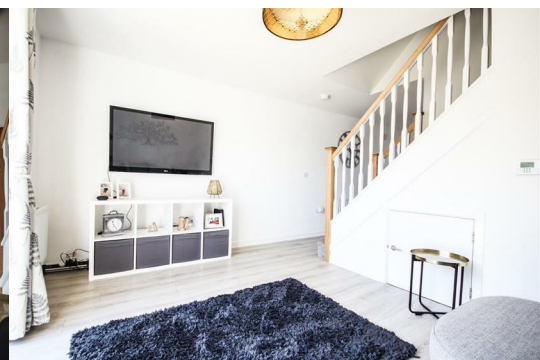
Summerville Village, Stockton-On-Tees, TS19 8GJ

Offers in excess of £140,000



Sensible Offers Invited - For Sale With The Advantage Of No Onward Chain & Vacant Possession. An Ideal First Purchase In A Popular Location. In Immaculate Condition, Ready To Move Straight Into! Remaining 10 Year N.H.B.C Warranty In Place.

Harper & Co Estate Agents Offer Flexible Viewing Appointments Including Evening & Weekends! You Can Call, Text, WhatsApp Message Or Email Us To Secure Your Booking. We Are Open Until 8:00pm Weekdays, 6:00pm Saturday & 4:00pm Sunday. Get in Touch Today!



Location

Just North Of Summerville Village Is The Historic Town Of Stockton, County Durham, A Short Drive Away, With All Its Shopping, Pubs, Restaurants, Cafes, Hairdressers, Beauticians And Banks. Norton High Street, Home To Popular Eateries And Shops, Is Only 6 Minutes* Away. Extensive Retail Therapy And Entertainment Can Be Found At Teesside Park 15 Minutes* By Car.

Summerville Village Also Provides Easy Access To A177 And A19. Meaning Middlesbrough Is 16 Minutes* Away While Darlington Is 23 Minutes* And Durham 28 Minutes*.

For Families There Are A Number Of Excellent Schools In The Area.

Accommodation Comprises

Entrance

Composite Entrance Door Leading Into The Kitchen.

Lounge

Lounge Area With Double Glazed Bi-Folding uPVC Doors To Rear Elevation, Under Stairs Storage Space, Radiator.

Kitchen

Fitted With A Good Range Of Contemporary Wall And Base Units, Double Glazed Window To The Front Elevation, Sink And Drainer Unit With Mixer Tap And Extractor Fan. Integrated Appliances Include: Hob & Electric Oven, Radiator And Door To The Cloakroom W.C.

Ground Floor Cloakroom W.C

Fully Tiled Walls & Fitted With Hand Wash Basin, W/C, Radiator.

First Floor Landing

Leads To The Bedrooms & Bathroom.

Bedroom One

uPVC Double Glazed Window, Radiator.

Bedroom Two

uPVC Double Glazed Window, Radiator.

Bathroom

Double Glazed Window To Rear Elevation, Bath With Overhead Shower & Screen, Wash Hand Basin, WC, Spotlights To Ceiling, Extractor Fan And Chrome Ladder Style Towel Warmer.

Energy Efficiency Rating; B

The Full Energy Efficiency Certificate Is Available On Request.

Council Tax Band; B

Council Tax Estimate £1,663

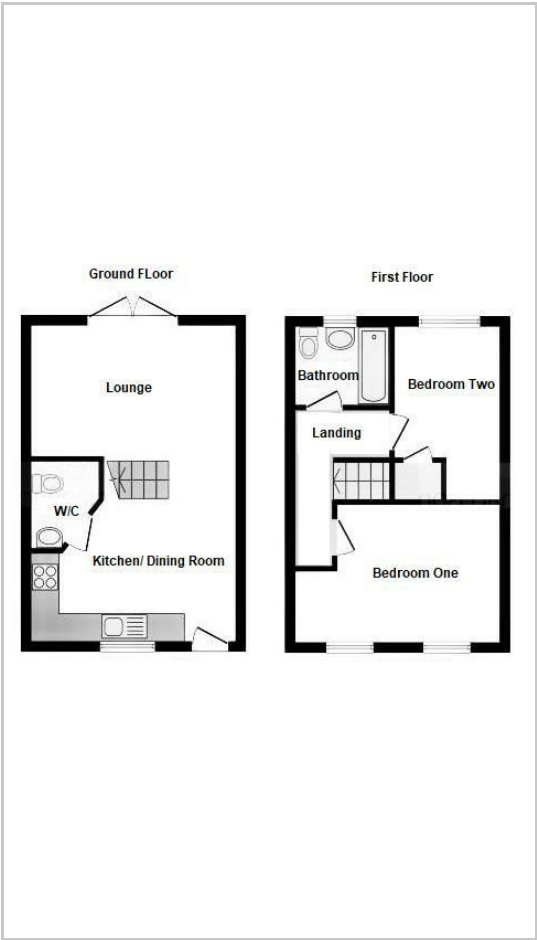
Disclaimer

Please note that all Measurements Are Approximate. The Floor Plan Is Not To Scale. The Floor Plan And Photographs Are For Illustrative Purpose Only.

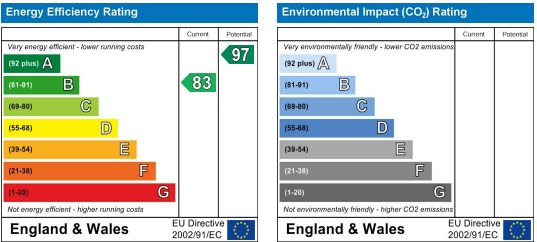
Area Map



Floor Plans



Energy Efficiency Graph



These particulars, whilst believed to be accurate are set out as a general outline only for guidance and do not constitute any part of an offer or contract. Intending purchasers should not rely on them as statements of representation of fact, but must satisfy themselves by inspection or otherwise as to their accuracy. No person in this firms employment has the authority to make or give any representation or warranty in respect of the property.